



SUNSET RESORT

Rarotonga

Sunset Resort is located on the western coast of Rarotonga, just 5 minutes from the International Airport and less than a minute walk to the spectacular turquoise lagoon. The resort is just off the main road, nestled in a private cove, amongst gently swaying palm trees and lush tropical gardens.

This resort offers 35 boutique self-contained studios and suites with a variety of room types to choose from. Each one is well positioned on the property to allow for guests privacy and to take in relaxing views of the pool and gardens, as well as the beach.

In each room you will find air-conditioning, king/twin bedding, hair dryers, kitchen facilities including tea & coffee making facilities, fridge/freezer and microwave, flat screen TV, and private patios with outdoor furniture.

The Beachfront 2 Bedroom Suite is the resort's most spacious room and is located at the front corner of the property, looking towards the beach. This room offers guests a wonderful view of the lagoon and ocean beyond. Offering more space as well as two completely private bedrooms, this room is suitable for two couples travelling together or small families (with children over 12 years).

The Poolside 2 Bedroom Poolside Suites sit closest to the road and mountainside. The interior is spacious, and the layout is similar to that of the Beachfront 2 Bedroom Suite, complete with a large private bathroom with disabled facilities and a patio. These rooms are ideal for individuals who are wheelchair bound.

The Poolside 1 Bedroom Suites are next door to the Poolside 2 Bedroom Suites and are of similar layout to the Studios, but offer extra comfort and space, complete with a larger living area and a private bedroom. They too are split over 2 levels and are perfect for couples.

The Poolside/Garden Studios are the resort's most popular. Four rooms are located just behind the Beachfront 2 Bedroom Suite and are stand-alone. These rooms enjoy relaxed views of the lush gardens from their patio and are only a short walk to the pool and restaurant area. The other 19 rooms are located near the pool area. They enjoy lovely views of the pool and garden, and are great for singles or couples. Three of the rooms are stand-alone whilst the rest are split over two levels.

The Beachfront Studios are identical to the Poolside/Garden Studios but sit close to the waters edge. They are each placed on the beachfront to share stunning views of the lagoon, ocean and amazing sunsets from their private patios. These rooms are also perfect for couples.

Sunset Resort offers a range of facilities to allow for guests' maximum relaxation, including a full Restaurant & Bar, 2 swimming pools, a DVD library for in-house guests to enjoy for free and more. The resort also offers complimentary one-way transfers to Saturday's Punanga Nui Markets and return transfers to Sunday's service at a local church.



SUNSET RESORT IN RAROTONGA



TAKE A DIP IN THE SALWATER POOL



BEACHFRONT STUDIO PATIO LOOKING OVER THE LAGOON



RELAX ON THE BEACH

TOP FEATURES

Conveniently Located

Sunset Resort is located only 5 minutes from the Airport and 8 minutes from Avarua town centre, and is within walking distance to nearby restaurants, a bakery, and grocery stores.

Restaurant and Bar Onsite

The Anchorage Restaurant & Bar is a spacious and open-aired restaurant that offers a great place to dine. Start your day off with complimentary breakfast served daily. Lunch offers selections from the a-la-carte menu, or one of the daily blackboard specials. Dinner features a wide range of delicious and innovative island cuisines from their a-la-carte menu. Live entertainment is also available on Tuesday, Thursday & Sunday evenings. At the Birdcage Bar, daily cocktail Happy Hour is available from 5pm to 6pm. Take a short walk to the bar in the afternoon to enjoy special pricing on freshly made cocktails. The bar offers a cool, relaxed setting to enjoy the rest of the evening.

Wheel Chair Accessible

The Poolside 2 Bedroom Suites are suitable for wheelchair bound individuals.

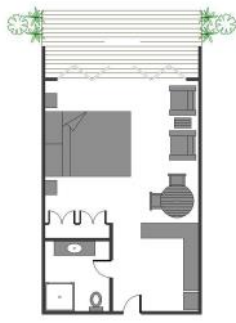
CHILD POLICY

NO CHILDREN UNDER 12 YEARS

INCLUSIONS

Complimentary daily tropical breakfast, free use of DVD library, room service 6 days per week, lounge area with full amenities after check-out.

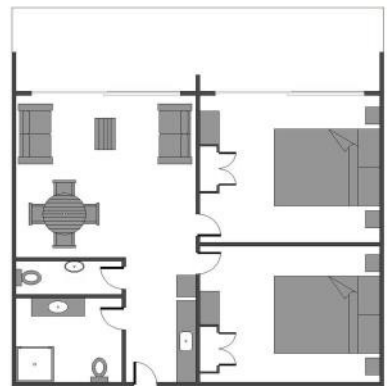
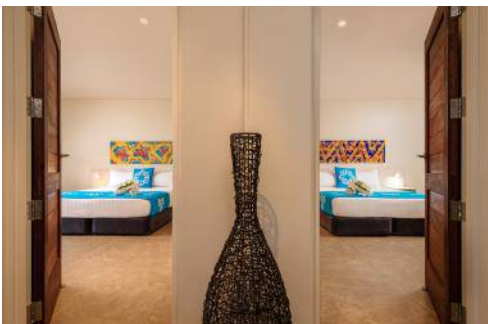
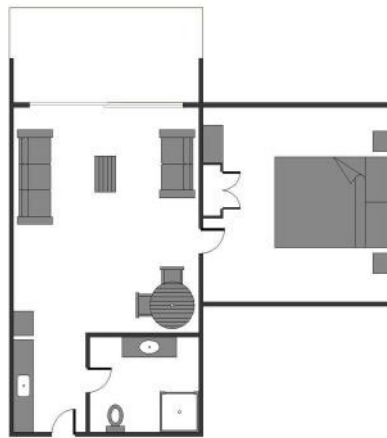
ROOM IMAGES



BEACHFRONT STUDIO



POOLSIDE/GARDEN STUDIO



POOLSIDE 1 & 2 BEDROOM ROOMS

ROOM CONFIGURATION & LAYOUT

ROOM CATEGORIES	TOTAL ROOMS	BEDDING CONFIGURATION	MAX PAX	ROOM SIZE
BEACHFRONT STUDIO	7	1 X KING BED/TWIN SINGLES	2	32m ²
BEACHFRONT 2 BEDROOM SUITE	1	2 X KING BEDS/TWIN SINGLES	4	32m ²
POOLSIDE/GARDEN STUDIO	21	1 X KING BED/TWIN SINGLES	2	32m ²
POOLSIDE 1 BEDROOM SUITE	2	1 X KING BED/TWIN SINGLES + 1 X SINGLE BED	3	48m ²
POOLSIDE 2 BEDROOM SUITE *DISABLED ACCESS	2	2 X KING BED/TWIN SINGLES + 1 X SINGLE BED	5	48m ²

PROPERTY LAYOUT



ROOM KEYS:

1 - 7	BEACHFRONT STUDIO	27 - 28	POOLSIDE 1 BEDROOM SUITE
8	BEACHFRONT 2 BEDROOM SUITE	29 - 32	POOLSIDE 2 BEDROOM SUITE
9 - 26 & 33 - 35	POOLSIDE/GARDEN STUDIO		

ROOM FACILITIES

	IN ROOM
AIR CONDITIONING	✓
BATH IN ROOM	X
BATHROBES	✓ BEACHFRONT ROOMS
CEILING FAN	X
CD/DVD PLAYER	✓
DISABLED FACILITIES	POOLSIDE 2 BEDROOM SUITES
FIRE EXTINGUISHERS	X
FULL OCEAN VIEW	BEACHFRONT ROOMS
HAIRDRYER	✓
INTERNET CONNECTION	✓ (SURCHARGE)
INSECT SCREENS	✓
KITCHEN	✓
LUGGAGE STORAGE	✓
MICROWAVE	✓
RADIO/ALARM CLOCK	✓
REFRIGERATOR	✓
ROOM SERVICED	✓
SAFE IN ROOM	✓
SHOWER IN ROOM	✓
SURROUND SOUND SYSTEM	X
TEA/COFFEE FACILITIES	✓
TELEPHONE IN ROOM	✓ IDD
TOILET IN ROOM	✓
TV IN ROOM	✓

PROPERTY FACILITIES

	ON SITE
BABY SITTING FACILITIES	X
BBQ FACILITIES	X
BEACH ON SITE	✓
BICYCLES	X
BEAUTY/HEALTH SERVICES	X
FULL OCEAN VIEW	✓
GARDEN VIEW	✓
HAMMOCKS	✓
INTERNET CONNECTION	✓ (SURCHARGE)
KAYAKS/CANOES	X
LAUNDRY SERVICE/FACILITY	✓
LUGGAGE STORAGE	✓
RESTAURANT/BAR	✓
SAFETY DEPOSIT BOX	✓
SHOP	X
SNORKELLING GEAR	✓
SWIM ALL TIDES	✓
SWIMMING POOL	1 X SALTWATER 1 X FRESH WATER
TOUR DESK	✓
VEHICLE RENTAL	CAN BE ARRANGED
WAITING LOUNGE	✓
WEDDING CO-ORDINATOR	✓

PROPERTY LOCATION



PROXIMITY TO	DRIVE / WALK TIME
AIRPORT	5 MINS DRIVE
AVARUA TOWNSHIP	8 MINS DRIVE
RESTAURANTS	
ANCHORAGE RESTAURANT & BIRDCAGE BAR	ONSITE
ALBERTO'S	5 MINS WALK
KIKAU HUT	3 MINS DRIVE
GROCERY STORES	5 MINS DRIVE

UPDATED FEBRUARY 2024